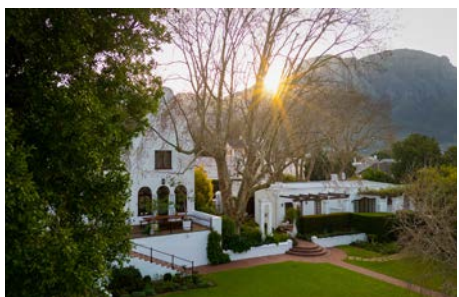
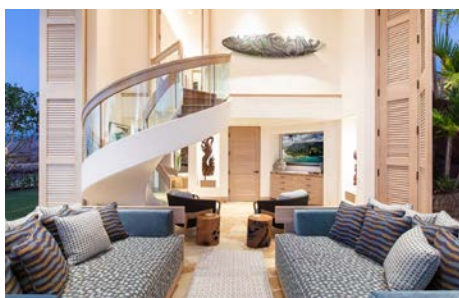


WHAT'S NEW



"Bringing you the finest places around the world is what we love to do here at Upscale Living magazine. In keeping with this tradition, we are focusing on introducing you to new kids on the block or accommodation establishments with a re-looked lease on life. Grab your travel diary as you want to get to these places as soon as possible!"

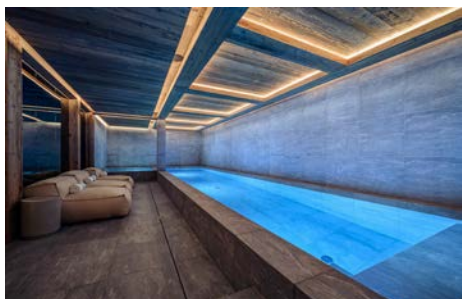


| BY HELENE RAMACKERS



CHALET CERVINIA

VAL D'ISÈRE, FRENCH ALPS



Chalet Cervinia is the latest masterpiece from owners Etienne and Jeanne Roesch Degoy, the husband-and-wife team behind Purple Ski's award-winning Chalet Inoko. The property is a brand-new build, a rarity when it comes to well-located chalets in the Alps' premier resorts. A true passion project for the couple, the chalet derives its name from the Italian name for the Matterhorn, the famous Swiss peak Etienne – a keen mountaineer – climbed earlier in 2025.

Tucked away in the quiet lanes of the charming Le Joseray area of Val d'Isère, the opulent three-story residence is a true hidden gem that effortlessly blends classic alpine design with state-of-the-art facilities. Less than 60 miles from the Joseray piste, and a short walk from the village center with its bustling shops, bars and restaurants, Chalet Cervinia is the ultimate choice for those in

search of a serene and luxurious retreat just moments from the action.

A sprawling open-plan living-dining space sits at the heart of the property, flanked by sun-soaked balconies to the south and east, ideal for soaking up the picturesque views of Val d'Isère village and the snowy treetops and peaks beyond. The inviting space is the vision of owner-interior designer Jeanne Roesch Degoy and combines a magnificent fireplace, wooden beams, stunning pendant lighting and floor-to-ceiling windows to create a luxurious yet cozy setting for family dinners and intimate nights by the fire.

Comprising five elegant double bedrooms plus a children's bunk room, each with its own en-suite bathroom, the chalet is the ideal choice for families and groups of friends alike. Guests will find ample opportunity to unwind après-ski at

the on-property spa, with its hot tub, sauna, massage room and expansive sapphire-hued swimming pool.

On the ground floor, a state-of-the-art home screening room delivers a true cinema experience, completed with tiered seating and ceiling lighting featuring a starry-night sky design, while the custom boot room provides a comfortable space to prepare for an exhilarating day on the slopes.

As with all chalets in the Purple Ski collections, guests of Chalet Cervinia have access to a full team of staff, daily housekeeping, an in-chalet ski and boot fitting service and a private chauffeured minibus, as well as a dedicated concierge service to cater to every guest's wish.

<https://www.purpleski.com/chalets/cervinia/>



FINCA BANYOLS

MALLORCA, SPAIN



Finca Banyols the exquisite 32-room, 5-star retreat effortlessly blends traditional Mallorcan charm with contemporary sophistication. Following a meticulous renovation and restoration, the estate invites guests to experience unmatched tranquility and beauty in one of the island's most breathtaking settings, nestled within the UNESCO-protected Tramuntana mountains.

As you approach Finca Banyols, expansive vistas unfurl before you. Nestled among 250 acres of ancient olive groves and fragrant citrus orchards, the estate commands sweeping views of the rugged mountain range—a serene oasis that feels worlds away from the rush of modern life. As the next chapter begins, fruit from these historic groves, orchards and vineyards will once again become a vital part of Finca Banyols' evolving story becoming key components to the experience at the property.

Step inside the meticulously restored main house and feel instantly embraced by its warm, welcoming atmosphere. Elegant yet intimate, the interiors blend rustic charm with modern comfort—high-beamed ceilings, weathered wooden floors, hand-hewn Santanyi stone, and carefully curated furnishings that pay homage to the property's rich heritage.

The sophistication of Mediterranean style finds expression in the timeless elegance of the 32 cozy rooms and suites. High ceilings and wooden floors lend a sense of airy spaciousness and warmth, blending classical charm with enduring quality. Light, natural tones infuse the spaces with brightness and serenity, while carefully curated details create an inviting, stylish atmosphere. Preserving the spirit of the original house, the interiors are enriched with subtle contemporary accents.

Natural materials, warm hues, and soft textures foster a deep

sense of comfort and tranquility. Wood, organic fabrics, and thoughtfully selected accessories harmonize with the heritage surroundings, celebrating the balance between tradition and modern living; underfloor heating provides extra comfort, while beds are dressed in fine Egyptian cotton linens for a restful night's sleep. Bespoke toiletries have been created by Viti Vinci - Jardí de Banyols' offers intense notes of bergamot and citrus with soft floral, woody, and spicy profiles.

For a touch of artistic flair, renowned fashion designer Ágatha Ruiz de la Prada has designed a vibrant signature suite, complete with a private garden—exhibiting a bold expression of her celebrated love of color and individuality.

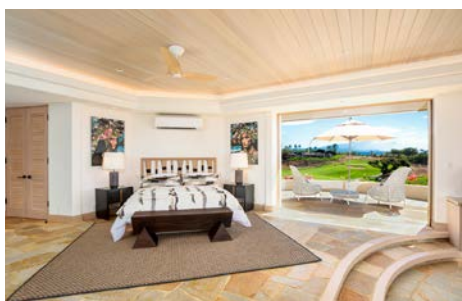
Beyond the main residence, the estate offers an array of refined amenities designed for the discerning traveler.

<https://www.fincabanyols.com/en/>



HALE 'O KA LA

BIG ISLAND, HAWAII



Destinations in Paradise, the boutique collection of luxury private villas in some of the world's most coveted coastal settings, announces the debut of Hale 'O Ka La, its fully re-imagined Big Island estate. Following an \$8 million renovation, the property reopens as a discreet retreat for multi-generational travelers, corporate groups, and private celebrations, offering a refined interpretation of contemporary Hawaiian living.

Set on a cliff within the prestigious Mauna Kea Resort on the Kohala Coast, Hale 'O Ka La, meaning "House of the Sun," was rebuilt from the ground up after the 2023 coastline fires. The 5,358-square-foot villa now marries the estate's original character with a fresh, modern aesthetic, positioning it as a centerpiece of the region's ongoing renaissance.

The redesign was a collab-

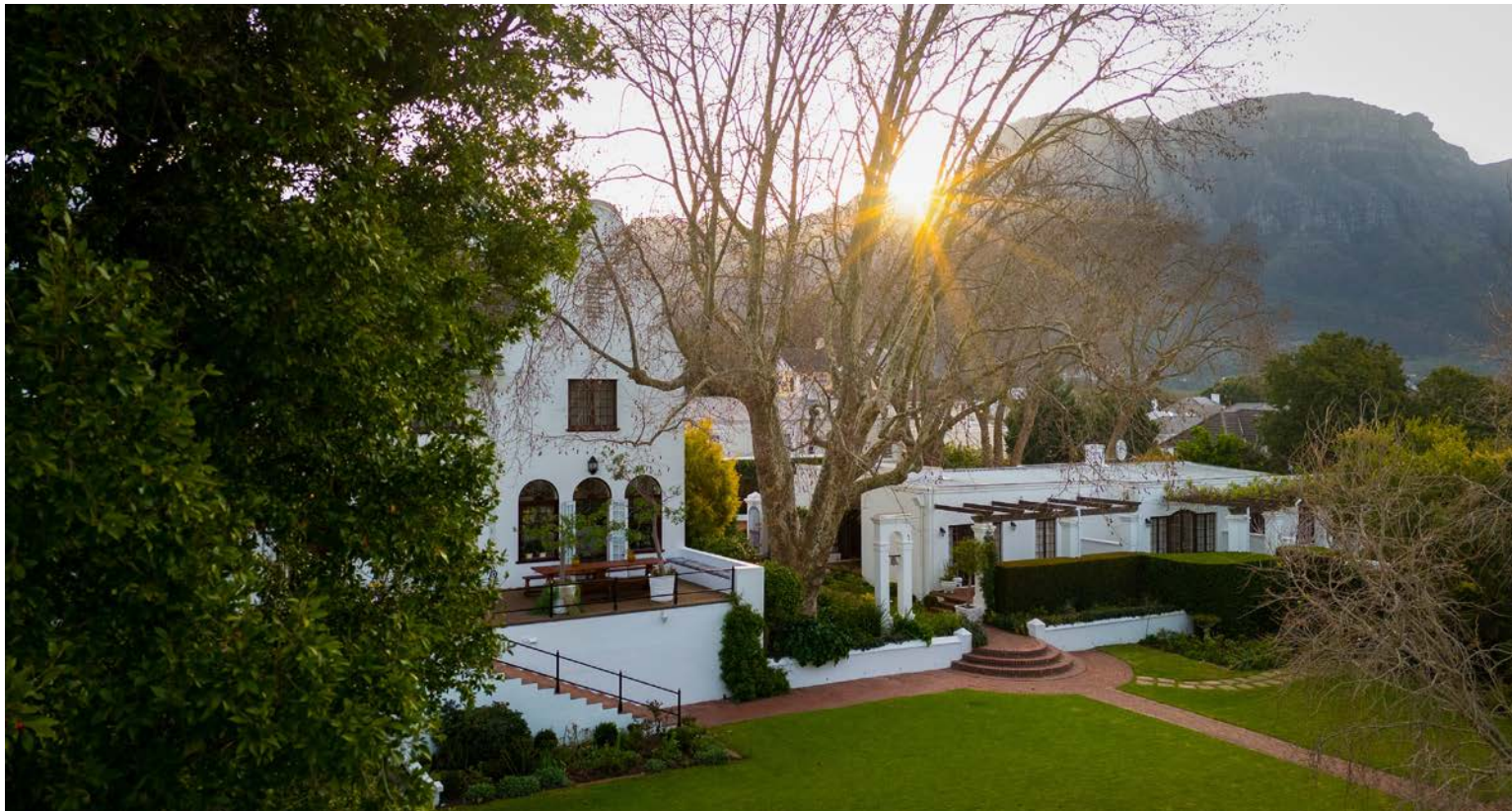
oration between local firms, Diane Bobek Designs, Taleah Smith Design, and Pono Hana Builders. In a nod to the property's legacy, the team preserved select dark wood accents and Asian antiquities while introducing lighter finishes, refined textures, and sculptural elements throughout. Copper fragments salvaged from the original roof now feature in the kitchen's pendant lighting, creating a quiet link between past and present.

The kitchen itself, anchored by a vast Neolith island, has been conceived as the heart of the home, ideal for guest chefs and convivial gatherings. In the bedrooms, custom white oak and walnut beds lend a sense of natural warmth, while carefully curated lighting and contemporary art pieces create an elegant ambiance. From each bedroom, the home's ultimate luxury unfolds—a dramatic volcano view. One

guest suite gazes directly over Pu'ukoholā Heiau, one of the Hawaiian Islands' most storied historic sites, while the master suite looks to a modern pilgrimage: the emerald fairways of the Mauna Kea Resort's golf course.

The estate's landscaping holds its own narrative of renewal. Original architect and owner, Ray Lager, returned to oversee the redesign of the grounds, blending lush tropical foliage with serene water features to heighten the home's sense of seclusion. A saltwater pool with a waterslide and swim-up palapa bar, a waterfall grotto with jacuzzi, and shaded lounging areas transform the estate into a private island playground.

<https://www.destinationsin-paradise.com/big-island-vacation-rental>



THE CLAREMONT BOUTIQUE HOTEL

CLAREMONT, CAPE TOWN



In 1928, English entrepreneur Frederick Henry Dumas Man commissioned Magdalena Gertrude Sauer, one of South Africa's first female architects, to design a Cape Town residence that blended European refinement with Cape heritage. The result was "The Andros", a stately Cape Dutch Revival manor whose gables, sash windows, and timber floors reflected the spirit of its time.

Nearly a century later, this residence has been re-imagined as The Claremont Boutique Hotel, a 15-room hideaway in the leafy suburb of Claremont. Now part of the Sabi Sabi Collection, it carries forward a legacy of heritage, authenticity, and warm South African hospitality. Importantly, it also marks the Collection's first expansion beyond the bushveld, extending its philosophy of place and empathy from the Sabi Sabi Lodges in the Kruger area to Cape Town.

Perfectly positioned beneath

the famed Table Mountain, and close to the Constantia Winelands and the vibrant Atlantic Seaboard, The Claremont creates a seamless city-and-safari journey. With only fifteen rooms, the experience is quietly personal.

Choose between Deluxe Rooms, Classic Rooms and the exclusive Sauer Villa, some located in the manor house, others opening onto the gardens or nestled beside the pool. Rooms are generous, with en-suite bathrooms, luxury amenities and incredible views. Each room tells its own story through original architectural details and considered décor — from William Morris prints to floral inspirations drawn from the gardens outside.

Spend time in The Safari Room, a library and lounge space, which is lined with books, artifacts and design details that nod to the bushveld, creating a quiet corner for reading or conversation.

It acts as a bridge between the Sabi Sabi Lodges and the Cape, carrying forward the atmosphere of safari storytelling into the city, with Table Mountain often visible in the backdrop beyond Claremont's leafy avenues.

The Sun Lounge is a light-drenched space that opens onto the gardens. With sun filtering through sash windows and views of the Plane tree, it is the heart of slow afternoons, tea service, or simply enjoying the hotel's calm ambiance.

Whether as a gentle pause before or after safari, or a Cape sojourn of its own, The Claremont completes the Sabi Sabi journey — from bushveld to city, heritage to hospitality, memory to home.

<https://www.sabisabi.com/>



DELFIN I

AMAZON, PERU



Delfin Amazon Cruises, the world's first Relais & Châteaux Cruise company and a leader in luxury river expeditions in the Upper Peruvian Amazon, has meticulously re-imagined Delfin I. The vessel redefines authentic elegance, comfort, and sustainability. As Peru's only family-owned and operated high-end river cruise company, Delfin Amazon Cruises (Delfin) takes great pride in its heritage, its role in fostering local prosperity, and its commitment to protecting the Amazon's vibrant ecosystem.

Guided by founders Aldo Macchiavello and Lissy Urteaga, Delfin integrates the cultural richness and natural splendor of the Amazon into every journey. Delfin I has oversized suites with private panoramic terraces, two of which include private whirlpools for an indulgent retreat. Floor-to-ceiling windows immerse guests in the rainforest, creating a seamless connection with nature.

Enhanced features include remodeled bathrooms, three-times-daily personalized cabin service, and an upgraded exterior with an air-conditioned observation deck and observatory balconies. On the top deck, guests can unwind in a newly designed lounge area, savor handcrafted cocktails at the bar, and stargaze under some of the world's clearest night skies. These enhancements reflect Delfin's unwavering commitment to offering elevated, intimate experiences in harmony with the natural environment.

Whether booked suite by suite or as a private floating villa, the Delfin I offers a serene retreat that combines privacy, authenticity, and sustainability. The Delfin I's transformation is a family-driven project brought to life by the creative vision of Vicca Verde, an architectural studio founded by Mateo Peschiera, Gonzalo Zegarra, and Horacio Goitre. Horacio worked closely with Lissy Ur-

teaga to ensure the renovation honors the Amazon's cultural and natural heritage, while also overseeing construction alongside Aldo Macchiavello in Iquitos.

Inspired by the geometric patterns of Shipibo art, the vessel's ornamental railings echo the spiritual essence of this ancestral culture. Handwoven ceilings, crafted by local artisans using natural fibers, celebrate the region's rich traditions, while sustainable Anacapi wood highlights the Amazon's biodiversity.

"We take immense pride in our collaboration as a family and our dedication to showcasing Peru's cultural and natural treasures. This is our country, this is our home," says Lissy Urteaga. "This renovation is a tribute to the beauty of the Amazon and the communities that make it so special."

<https://www.delfinamazon-cruises.com/our-vessels-delfin-i/>